



Czech Lighting Society



Slovak Lighting Society

SECOND INFORMATION



**LIGHTING AT THE DAWN
OF THE NEW ERA**

20 – 22 September 2022

14th European Lighting Conference

LUX EUROPA 2022

PRAGUE – CZECH REPUBLIC – HEART OF EUROPE

Hotel OLYMPIK / ARTEMIS

1. INVITATION

On behalf of the organizers, Czech Lighting Society jointly with the Slovak Lighting Society, we are pleased to invite You to participate in the 14th European lighting conference LUX EUROPA 2022 which will be held from 20th to 22nd September 2022 in Prague – capital city of Czechia, cultural centre of middle Europe and an attractive touristic destination.

Aim of the conference is to present the newest scientific and professional knowledge and achievements in the field of light and lighting with emphasis on regionally specific problems of the European countries. State-of-the-art in lighting technology will be intermediated by reputable experts, who will share with You results of their latest work and recent professional experience. The conference will provide space for broad discussion, overview of modern and progressive lighting products, establishment of new business contacts and strengthen those existing. Manufacturers and trading companies will have opportunity to present their products, services and solutions.

Motto of the conference is „Lighting at the Dawn of the New Era“. Standing at the begin of the decade and looking towards new post-pandemic horizons, the conference would like to highlight key topics of today's lighting such as:

- LED lighting technology developments
- new approaches to daylighting of buildings
- human centric and integrative lighting
- utilization of optical radiation to support living organism
- germicidal radiation in cope with COVID-19
- specific lighting applications indoors and outdoors
- dynamic, adaptive and smart lighting
- photometry and colorimetry
- environmental aspects of antropogenic lighting
- increasing energy efficiency of lighting systems
- lighting education and professional training

The conference is intended for wider professional audience comprising lighting engineers, electrical engineers, architects, civil engineers – working as lighting designers, traders, suppliers, retailers, investors, implementers, researchers etc.

Social part of the conference will comprise boat trip on the Vltava river exhibiting touristic highlights of the Prague and gala dinner featuring traditional Czech folklore. We are also preparing an attractive programme for accompanying persons.

The conference LUX EUROPA 2022 is an ideal opportunity to learn something new, to meet colleagues and to establish new acquaintances. Book in Your calendar, we are looking forward to see You in Prague!



A handwritten signature in blue ink, appearing to be 'Dionýz'.

Dionýz Gašparovský
President of the Council Lux Europa
Co-chairman of the Organization Team



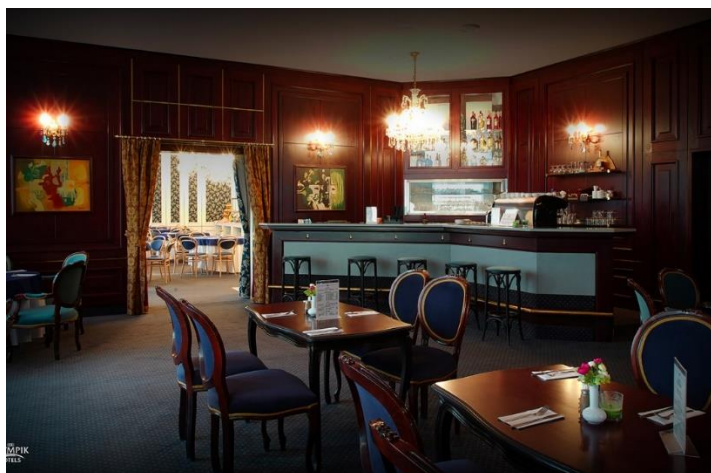
A handwritten signature in blue ink, appearing to be 'Tomáš'.

Tomáš Novák
Chairman of the Organization Team

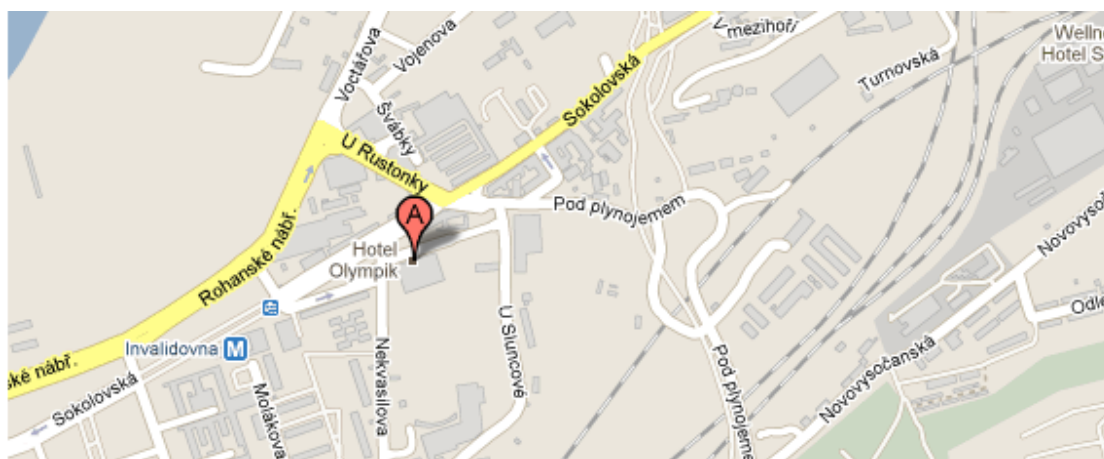
2. VENUE OF THE CONFERENCE

Hotels ARTEMIS ****

U Sluncové 14, Praha 8 186 76
Recepce hotelu tel: +420 266 184 889
<https://www.olympik.cz/cz/artemis/>



Accommodation is available directly in hotels of the conference venue complex.



Airport
16 km / 25 minutes (taxi)



Historical centre
10 minutes (metro)



Nearest metro station
Invalidovna, 5 minutes walking

3. PRAGUE – capital city in the heart of Europe

Welcome to Czech Republic!

Destination Czech Republic: Also known as Czechia, a landlocked country in Central Europe is bordered by Austria, Germany, Poland, and Slovakia. Population of about 10,5 million inhabitants live in a country covering 78,867 km². Mild continental climate in a land full of agricultural fields, mountains, forests, lakes and rivers makes it very pleasant for living. Historical sites can be found spread across the country, not just in city centres. Inheritance of the famous medieval kingdom of Bohemia belongs to one of highlights when visiting Czechia. Come and immerse Yourself into atmosphere of the place where history shakes hand with modern culture, explore hidden charm of natural spots, touch spirit of the proud but hospitable nation.

Czechia is also best known for hundreds of medieval castles, tasteful cuisine, benchmark industry, Škoda and Tatra cars, Baťa shoes, FAB lockers just to name few brands known worldwide. Czech beer is legendary; evening spent with friends and couple of mugs must be an unforgettable experience. The original Budweiser of Budvar and the Pilsner Urquell which originated and gave name for the most prevalent, pale lager type of beer, are crowns of the Czech brewery. Notable Czech people are: Miloš Forman (film maker and director), Ivan Lendl (tennis player), Jaromír Jágr (NHL ice hockey legend), Franz Kafka (novelist), Sigmund Freud (founder of psychoanalysis), Antonin Dvorak (composer), Václav Havel (dissident, novelist and president), Gregor Mendel (biologist).



Practical information

- **Language:** Czech (west Slavic group)
- **Currency:** koruna (CZK, Kč), average exchange rate 26 CZK/EUR
- **Business hours:** 09:00 – 18:00, shopping malls open until 21:00
- **Electric outlets:** 230 V / 50 Hz, plug type C/E
- **Mobile network:** very good coverage, major service providers are O₂, T-mobile and Vodafone
- **Transportation:** international airports, railway networks and bus routes connect the country node Prague and other major Czech cities with many destinations in Europe and outside; Prague lies at crossing of transcontinental transportation corridors

City of hundred towers: PRAGUE

Prague is the capital and largest city in the Czech Republic, the 13th largest city in the European Union and the historical capital of Bohemia. Situated on the Vltava river, Prague is home to about 1,3 million people, while its metropolitan area is estimated to have a population of 2,7 million. The city has a temperate oceanic climate, with relatively warm summers and chilly winters.

Prague is a political, cultural, and economic centre of Central Europe complete with a rich history. Founded during the Romanesque and flourishing by the Gothic, Renaissance and Baroque eras, Prague was the capital of the Kingdom of Bohemia and the main residence of several Holy Roman Emperors, most notably of Charles IV (r. 1346–1378). It was an important city to the Habsburg Monarchy and its Austro-Hungarian Empire. The city played major roles in the Bohemian and Protestant Reformation, the Thirty Years' War and in 20th-century history as the capital of Czechoslovakia between the World Wars and the post-war Communist era.



Prague is home to a number of well-known cultural attractions, many of which survived the violence and destruction of 20th-century Europe. Main attractions include Prague Castle, Charles Bridge, Old Town Square with the Prague astronomical clock, the Jewish Quarter, Petřín hill and Vyšehrad. Since 1992, the extensive historic centre of Prague has been included in the UNESCO list of World Heritage Sites.

The city has more than ten major museums, along with numerous theatres, galleries, cinemas, and other historical exhibits. An extensive modern public transportation system connects the city. It is home to a wide range of public and private schools, including Charles University in Prague, the oldest university in Central Europe.

Prague is classified as an "Alpha-" global city according to GaWC studies and ranked sixth in the Tripadvisor world list of best destinations in 2016. In 2019, the city was ranked as 69th most liveable city in the world by Mercer. In the same year, the PICSA Index ranked the city as 13th most liveable city in the world. Its rich history makes it a popular tourist destination and as of 2017, the city receives more than 8,5 million international visitors annually. In 2017, Prague was listed as the fifth most visited European city after London, Paris, Rome, and Istanbul.

4. FRAMEWORK CONFERENCE PROGRAMME

Time slots		September 20	September 21	September 22
08:00	08:30	REGISTRATION	BREAKFAST	BREAKFAST
08:30	10:00	Opening	Plenary session	Parallel sessions
		Keynote speaker		
10:00	10:30	COFFEE BREAK	COFFEE BREAK	COFFEE BREAK
10:30	12:00	Keynote speakers	Plenary session	Parallel sessions
12:00	13:00	LUNCH	LUNCH	LUNCH
13:00	14:30	Parallel sessions	Parallel sessions	Topical workshops
14:30	15:00	COFFEE BREAK	COFFEE BREAK	Closure and farewell
15:00	16:30	Parallel sessions	Parallel sessions	
16:30	17:00	Poster session / Exhibition	Poster session / Exhibition	
17:00	19:00	EVENING BREAK	EVENING BREAK	
19:00	22:00	Boat trip on Vltava	Gala dinner	

5. PROGRAMME FOR ACCOMPANYING PERSONS

September 20	September 21	September 22
Highlights of Prague	Český Krumlov: medieval heritage	Prague old town walking tour
Half-day tour, afternoon	Full-day trip, lunch included	Half-day tour, morning

Programme for accompanying persons is included in the registration fee package for accompanying persons, see below.

6. CONFERENCE LANGUAGE

Conference language is English.

7. REGISTRATION FEES AND PAYMENT

Registration form:

Interested participants are kindly requested to complete the online registration form which is available here:

<https://form.jotform.com/220933614076353>

Registration fees:

	Early-bird before 15 th June 2022	Standard after 15 th June 2022
Regular participants	490 EUR	560 EUR
Students	240 EUR	280 EUR
Accompanying persons	280 EUR	320 EUR

	Registration fee covers
Regular participants	Organizational costs, proceedings, access to conference rooms and exhibition hall, coffee breaks, lunches, social functions
Students	Organizational costs, proceedings, access to conference rooms and exhibition hall, coffee breaks, lunches
Accompanying persons	Organizational costs, programme for accompanying persons, access to exhibition hall, lunches, social functions

Payment methods:

- **Standard wire bank transfer** Use the bank transfer details below
- **Simplified QR code payment** You'll find the QR code on Your invoice*

* Invoice will be sent to the participants upon registration.

Bank transfer details:

Make payment of the registration fee via bank transfer and send us confirmation of the payment to the e-mail address sokanska@seznam.cz. Deadline for the payment is 10 September 2022.

Account number: 94-718550247/0100
IBAN: **CZ3101000000940718550247**
SWIFT/BIC: KOMBCZPPXXX
Beneficiary: Ceska spolecnost pro osvetlovani
Beneficiary's address: 17. listopadu 15, 708 00 Ostrava – Poruba,
Bank name: Komerčni banka a. s.
Bank address: Na Příkope 33, cp. 969, 114 07 Praha 1
Reference: LUX EUROPA 2022

8. ACCOMODATION

Hotel ARTEMIS (recommended, conference venue):

Hotel Artemis****

Single room including breakfast	75 EUR / night
Double room (two persons) including breakfast	83 EUR / night

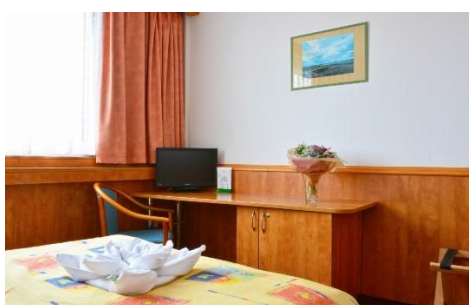
Alternative options in the immediate vicinity:

Hotel Olympik****

Single room including breakfast	63 EUR / night
Double room (two persons) including breakfast	70 EUR / night

Hotel Tristar***

Single room including breakfast	60 EUR / night
Double room (two persons) including breakfast	68 EUR / night



9. IMPORTANT DEADLINES

15 June 2022	Early-bird registration deadline
30 June 2022	Third information
15 August 2022	Guarantee of accomodation
10 September 2022	Standard registration deadline

10. LUX EUROPA COUNCIL

President:

Dionýz Gašparovský SK Slovenská svetelnotechnická spoločnosť (SSTS)

Members:

Peter Dehoff	AT	Lichttechnische Gesellschaft Österreichs (LTG)
Frédéric Leloup	BE	Belgian Institute on Illumination (IBE-BIV)
Kiril Kasev	BG	National Committee for Lighting in Bulgaria (NKO)
Mario Rechsteiner	CH	Schweizer Licht Gesellschaft (SLG)
Tomáš Novák	CZ	Česká společnost pro osvětlování (ČSO)
Matthias Hessling	DE	Deutsche Lichttechnische Gesellschaft e.V. (LiTG)
Per Reinholdt	DK	Dansk Center for Lys (DCL)
Manuel Melgosa	ES	Comité Español de Iluminación (CEI)
Heikki Härkönen	FI	Suomen valoteknillinen seura (IES)
Marie-Pierre Alexandre	FR	Association Française de l'Éclairage (AFE)
Frangiskos Topalis	GR	Hellenic Lighting Association (HELIA)
Péter Schwarcz	HU	Világítástechnikai Társaság (VTT)
Pat Lehane	IE	Lighting Association Ireland (LAI)
Laura Bellia	IT	Associazione Italiana di Illuminazione (AIDI)
Geertje Hazenberg	NL	Nederlandse Stichting Voor Verlichtingskunde (NSVV)
Katia Valerie Banoun	NO	Lyskultur
Piotr Pracki	PL	Polski Komitet Oświetleniowy SEP (PKO)
Anna Shakhparunyants	RU	Российский национальный комитет МКО (CIE NC RU)
Dorin Beu	RO	Asociația Română de Iluminat (ARI)
Miomir Kostić	RS	Srpsko društvo za osvetljenje (DOS)
Grega Bizjak	SI	Slovensko društvo za razsvetljavo (SDR)
Mehmet Kucukdogu	TR	Aydınlatma Türk Milli Komitesi (ATMK)
Peter Thorns	UK	Society of Light and Lighting (SLL)

11. BOARD OF DIRECTORS

Chairman:

Dionýz Gašparovský SK Slovenská svetelnotechnická spoločnosť (SSTS)

Members:

Peter Dehoff	AT	Lichttechnische Gesellschaft Österreichs (LTG)
Frédéric Leloup	BE	Belgian Institute on Illumination (IBE-BIV)
Mario Rechsteiner	CH	Schweizer Licht Gesellschaft (SLG)
Tomáš Novák	CZ	Česká společnost pro osvětlování (ČSO)
Matthias Hessling	DE	Deutsche Lichttechnische Gesellschaft e.V. (LiTG)
Laura Bellia	IT	Associazione Italiana di Illuminazione (AIDI)
Geertje Hazenberg	NL	Nederlandse Stichting Voor Verlichtingskunde (NSVV)
Piotr Pracki	PL	Polski Komitet Oświetleniowy SEP (PKO)
Grega Bizjak	SI	Slovensko društvo za razsvetljavo (SDR)
Mehmet Kucukdogu	TR	Aydınlatma Türk Milli Komitesi (ATMK)
Peter Thorns	UK	Society of Light and Lighting (SLL)

12. PROGRAMME COMMITTEE

Chairman:

Dionýz Gašparovský SK

Members:

László Balázs	HU	Rafał Krupiński	PL
Meike Barfuß	DE	Frédéric Leloup	BE
Laura Bellia	IT	Banu Manav	TR
Dorin Beu	RO	Balázs Vince Nagy	HU
Grega Bizjak	SI	Tomáš Novák	CZ
Urszula Błaszczak	PL	Sermin Onaygil	TR
Constantinos Bouroussis	GR	Anna Pellegrino	IT
Karl Brandstätter	AT	Piotr Pracki	PL
Vladimir Budak	RU	Thomas Römhild	DE
Lambros Doulos	GR	Wouter Ryckaert	BE
Roman Dubnička	SK	Axel Stockmar	DE
Simonetta Fumagalli	IT	Raisa Stolyarevskaya	RU
Catalin Galatanu	RO	Marek Šmíd	CZ
Peter Hanuliak	SK	Peter Thorns	UK
Valéry Ann Jacobs	BE	Frangiskos Topalis	GR
Peter Janiga	SK	Rengin Ünver	TR
Matej B. Kobav	SI	Michal Vik	CZ
Zoltán Kolláth	HU		

13. ORGANIZING TEAM

Chairmen:

Tomáš Novák	ČSO	tomas.novak1@vsb.cz	+420 602 724 207
Dionýz Gašparovský	SSTS	dionyz.gasparovsky@stuba.sk	+421 903 455 035

Members:

Ivana Sokanská	ČSO	sokanska@seznam.cz	+420 608 468 956
Pavel Valíček	ČSO	pavel.valicek@vsb.cz	+420 603 170 348
Peter Janiga	SSTS	peter.janiga@stuba.sk	+421 904 972 150
Jana Raditschová	SSTS	raditschova@stuba.sk	+421 903 723 282

14. SECRETARIAT

Česká společnost pro osvětlování, z. s.
17. listopadu 2172/15
708 00 Ostrava-Poruba
Czech Republic

Person in charge:

Ivana Sokanská

☎ +420 608 468 956

✉ sokanska@seznam.cz

